

Background

The national immunisation uptake statistics, based on available data, for Quarter 1 2017 are presented in this report. These immunisation uptake statistics relate to children at 12 (born between 01/01/2016 and 31/03/2016) and 24 (born between 01/01/2015 and 31/03/2015) months of age in Quarter 1-2017. These children were recommended the vaccines outlined in table 1. The immunisation schedule changed in 2015 for children born on or after July 1st 2015 after the National Immunisation Advisory Committee (NIAC) recommended changing the meningococcal C (MenC) immunisation schedule in the primary childhood programme from three doses at 4, 6 and 13 months to two doses at 4 and 13 months because of evidence that a single dose of MenC vaccine provides protection for the first year of life. Please note the immunisation schedule changed in 2016 for children born on or after October 1st 2016. Please see the HSE-National Immunisation Office (NIO) website at <http://www.immunisation.ie> for current and detailed information on the Irish primary childhood immunisation schedule and also recommended vaccinations for older children and adults.

For children at 12 months of age in Quarter 1 2017, immunisation uptake rates of three doses of vaccines against diphtheria (D₃), pertussis (P₃), tetanus (T₃), *Haemophilus influenzae* type b (Hib₃), polio (Polio₃), hepatitis B (HepB₃), one dose of meningococcal serogroup C conjugate vaccine (MenC₁), two doses of pneumococcal conjugate vaccine (PCV₂) and one dose of BCG vaccine are reported.

For children at 24 months of age in Quarter 1 2017, immunisation uptake rates of three doses of vaccines against diphtheria (D₃), pertussis (P₃), tetanus (T₃), *Haemophilus influenzae* type b (Hib₃), polio (Polio₃), hepatitis B (HepB₃), meningococcal group C (MenC₃) and pneumococcal conjugate vaccine (PCV₃) and one dose of vaccine against measles, mumps and rubella (MMR₁) are reported. One dose of vaccine against *Haemophilus influenzae* type b (Hib_b), one dose of meningococcal group C vaccine (MenC_b) and one dose of pneumococcal conjugate vaccine (PCV_b) given on or after 12 months of age are also reported.

The uptake statistics are also presented in this report by Community Healthcare Organisation (CHO) and Local Health Office (LHO). While there are 32 LHOs the immunisation uptake data for North Lee and South Lee are reported as a combined figure. The uptake rates presented here were rounded to zero decimal place.

Table 1. Primary childhood immunisation schedule for children born between 01/07/2008 and 30/09/2016

Age	Children born 01/07/2008 to 30/06/2015	Children born 01/07/2015 to 30/09/2016
Birth	BCG	BCG
2 months	DTaP/Hib/IPV/HepB (6 in 1) + PCV	DTaP/Hib/IPV/HepB (6 in 1) + PCV
4 months	DTaP/Hib/IPV/HepB (6 in 1) + MenC	DTaP/Hib/IPV/HepB (6 in 1) + MenC
6 months	DTaP/Hib/IPV/HepB (6 in 1) + PCV + MenC	DTaP/Hib/IPV/HepB (6 in 1) + PCV
12 months	MMR + PCV	MMR + PCV
13 months	MenC + Hib	MenC + Hib

Please note the primary immunisation schedule changed in 2015 for children born on or after 01/07/2015 and changed in 2016 for children born on or after October 1st 2016. Please see the HSE-National Immunisation Office (NIO) website at <http://www.immunisation.ie> for current and detailed information on the Irish primary childhood immunisation schedule and also recommended vaccinations for older children and adults

BCG	Bacille Calmette Guerin vaccine
DTaP	Diphtheria, Tetanus and acellular Pertussis vaccine
HepB	Hepatitis B vaccine
Hib	<i>Haemophilus influenzae</i> type b vaccine
IPV	Inactivated Polio Virus vaccine
MenC	Meningococcal group C vaccine
MMR	Measles, Mumps and Rubella vaccine
PCV	Pneumococcal Conjugate Vaccine

Immunisation uptake among children at 12 months of age in Quarter 1-2017

National

- Immunisation uptake rates in children 12 months of age in Q1-2017 are presented by Community Healthcare Organisation (CHO) in table 2. National immunisation uptake rates were 91% for D₃, T₃, P₃, Hib₃, Polio₃, HepB₃ and PCV₂ and 95% for MenC₁.
- BCG vaccine stock in all HSE Areas expired at the end of April 2015. The HSE continues to experience ongoing delays with the supply of BCG vaccine. This continues to be a Europe wide issue. The number of cases of TB has been steadily falling in Ireland. The number of cases of TB for the years 2014 and 2015 was at the lowest level since records began. Most European countries do not give BCG vaccine to all babies. The National Immunisation Advisory Committee (NIAC), an independent expert group on immunisation and the Health Information and Quality Authority (HIQA) have both recommended that BCG vaccine does not now need to be given routinely to all babies in Ireland. Please see <http://www.hse.ie/eng/health/immunisation/pubinfo/babychildimm/vaccprevdisease/tb/> for further information.
- Figure 1 presents the national uptake rates at 12 months for each vaccine from Q3-2000 to Q1-2017. Compared to Q4-2016, national uptake rates in Q1-2017 for D₃, T₃, P₃, Hib₃, Polio₃, HepB₃, MenC₁ and PCV₂ were unchanged (figure 1).

Community Healthcare Organisation (CHO)

- Among the CHOs, the uptake rates for D₃, T₃, P₃, Hib₃, Polio₃ and HepB₃ ranged from 89% to 94%, MenC₁ ranged from 93% to 97% and PCV₂ ranged from 87% to 94%, (Table 2).

Local Health Office (LHO)

- The immunisation uptake rates by LHO are shown in appendix 1.
- D₃, MenC₂ and PCV₂ immunisation uptake rates are mapped by LHO in figures 2-4.
- The target uptake rate of 95% was reached in five LHOs for D₃, T₃, P₃, Hib₃, Polio₃ and HepB₃, six for PCV₂ and in 22 LHOs for MenC₁.

Table 2. Immunisation uptake (%) at 12 months in cohort born 01/01/2016–31/03/2016

Community Healthcare Organisation/LHO*	No. in cohort [#]	BCG	D ₃ T ₃	P ₃	Hib ₃	Polio ₃	HepB ₃	MenC ₁	PCV ₂
CHO1 (CN/MN, DL, SO/LM)	1266	0.0†	93	93	93	93	92	96	93
CHO2 (G, MO, RN)	1461	0.0	94	94	94	94	94	97	94
CHO3 (CE, L, TN)	1229	0.0	92	92	92	92	92	95	93
CHO4 (NC, NSL, WC, KY)	2198	0.0	90	90	90	90	90	95	87
CHO5 (CW/KK, TS, WD, WX)	1596	0.3	90	90	90	90	90	95	90
CHO6 (DS, DSE, WW)	1156	0.1	92	92	92	92	92	95	92
CHO7 (DSC, DSW, DW, KE)	2427	0.0	91	91	91	91	91	95	91
CHO8 (LS/OY, LD/WH, LH, MH)	2188	0.0†	94	94	94	94	94	96	94
CHO9 (DNW, DNC, DN)	2216	0.0	89	89	89	89	89	93	88
Ireland	15737†	0.0†	91	91	91	91	91	95	91

na = not available at this time

*Shown in brackets are the LHOs in each CHO. Please see Appendix 3 to translate LHO codes. The geographical boundaries of the CHOs are shown at http://www.hse.ie/eng/services/publications/corporate/CHO_Chapter_1.pdf

[#] The denominator/number in cohort varied slightly according to vaccine. D₃T₃ cohorts are shown here.

†Number in cohort for BCG is 14,082. BCG data are unavailable for the former HSE North Eastern Area i.e. CN/MN, LH, MH; therefore CHO1 and CHO8 BCG data are incomplete. At the time of writing of this report the HSE continues to experience on-going delays with the supply of BCG vaccine. This continues to be a Europe wide issue. See point 2 above regarding BCG vaccine stock in Ireland.

CHO3 PCV₂ data were extracted at a later date than the other vaccines in CHO3

Immunisation uptake among children at 12 months of age in Quarter 1-2017

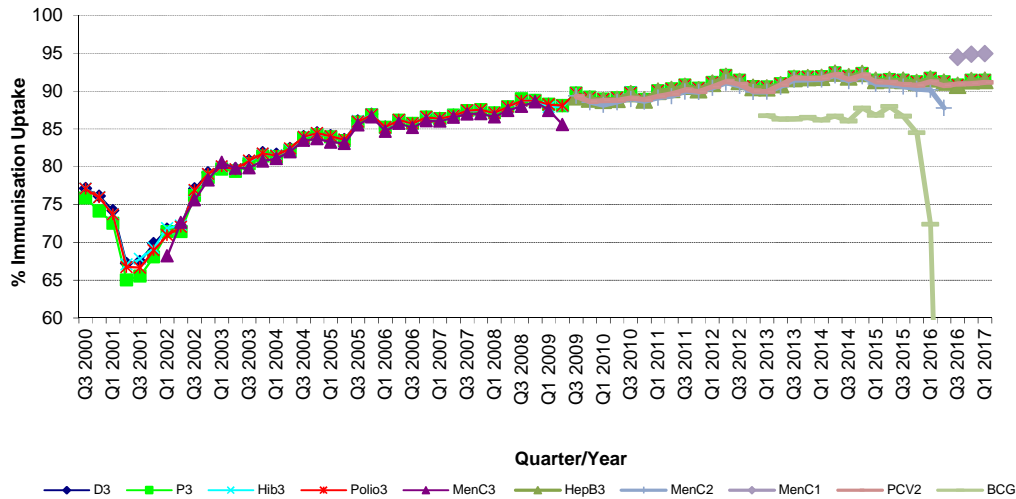


Figure 1. National quarterly immunisation uptake rates at 12 months

X-axis ranges from 60-100%.

See point 2 on the previous page regarding BCG vaccine stock in Ireland.

Since T_3 uptake is identical to D_3 uptake only D_3 uptake figures presented. The Q3-2008 $MenC_3$ uptake figure is based on data from six of the eight HSE Areas. The Q1-2009 HSE-Eastern Area D_3 , P_3 , T_3 , $Polio_3$ and MMR_1 uptake figures exclude those born on the 31/03/2007. The Q3-2009 figures are incomplete as two HSE Areas were unable to provide data, two additional areas were unable to provide $MenC_2$ data and one additional area was unable to provide PCV_2 data. The Q4-2009 figures are incomplete as three HSE Areas were unable to provide data. The Q1-2010 figures are incomplete as two HSE Areas were unable to provide data and three were unable to provide $MenC_2$ data. The Q2-2010 figures are incomplete as two HSE Areas were unable to provide data. The Q4-2010 figures are incomplete as one HSE Area was unable to provide data. BCG uptake data are only displayed in this graph from Q1 2013 as BCG uptake data were available for only five of the eight HSE-Areas (this includes data from the HSE-Southern Area which relates to Kerry data only) from Q3 2003 to Q2 2009 (except Q3 2004 when HSE-Southern Area data were not available), for three HSE-Areas in Q3 2009, for two HSE-Areas in Q4 2009, for three HSE-Areas in Q1 2010 and Q2 2010, for five HSE-Areas in Q4 2010, Q1 2011 and Q2 2011, for six HSE-Areas in Q3 2011 to Q4 2012 and for seven HSE Areas from Q1 2013. From Q3 2011 to Q3 2014 HSE Western Area BCG data was not available by LHO, uptake was provided for the HSE Western Area as a whole. In Q4 2014 BCG data was available for Galway and Roscommon- the BCG denominator for HSE Western Area in Q4 2014 was the sum of the Galway and Roscommon denominators. Since Q1 2015 BCG data was available for Galway, Mayo and Roscommon LHOs.

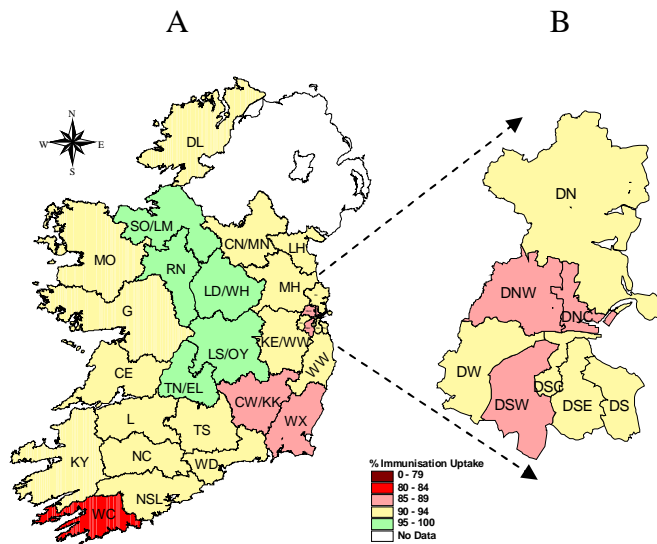


Figure 2. D₃ immunisation uptake rates (%) by LHO, in those 12 months of age in Quarter 1-2017, in (A) Ireland and (B) Dublin. Please see Appendix 3 to translate LHO codes.

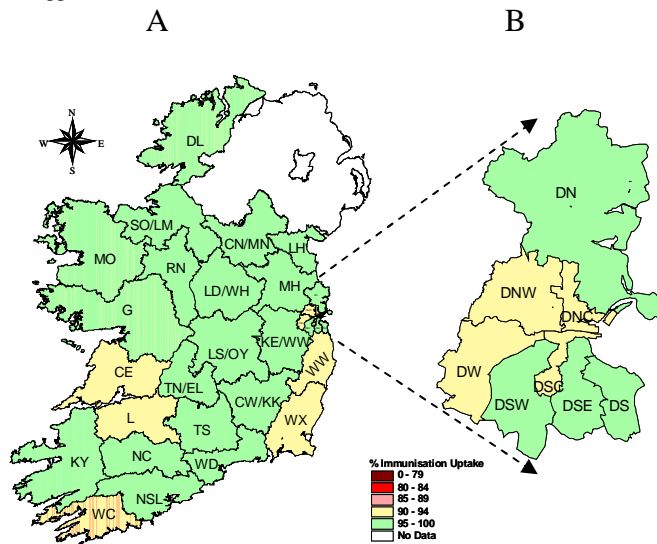


Figure 3. MenC₁ immunisation uptake rates (%) by LHO, in those 12 months of age in Quarter 1-2017, in (A) Ireland and (B) Dublin. Please see Appendix 3 to translate LHO codes.

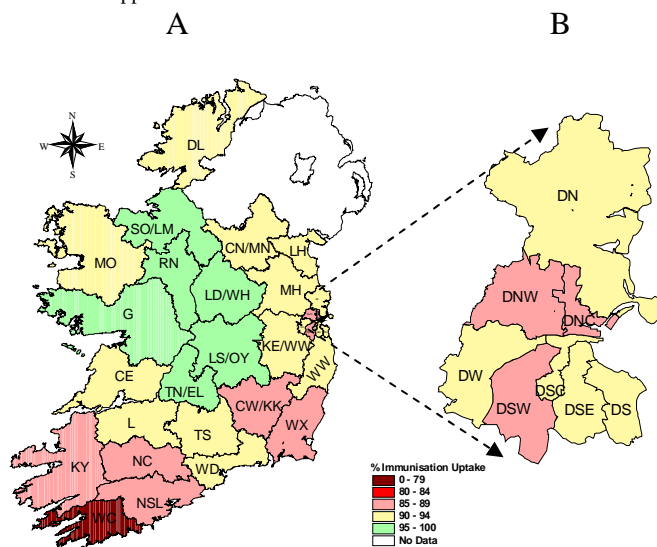


Figure 4. PCV₂ immunisation uptake rates (%) by LHO, in those 12 months of age in Quarter 1-2017, in (A) Ireland and (B) Dublin. Please see Appendix 3 to translate LHO codes.

Immunisation uptake among children 24 months of age in Quarter 1-2017

National

- National uptake rates were 95% for D₃, T₃, P₃, Hib₃, Polio₃ and HepB₃, 92% for MMR₁, 90% for Hib_b and PCV₃ and 86% for MenC₃ (table 3). Compared to the previous quarter, national uptake rates in Q1-2017 declined by 1% for Hib_b, MenC₃ and PCV₃ and were unchanged for the remainder (figure 5).
- In total, eight of the nine CHOs were able to provide uptake data on MenC_b and PCV_b in Q1-2017. These Areas cover approximately 91% of the national birth cohort. Where data were available, national uptake was 89% for MenC_b and 92% for PCV_b. Compared to the previous quarter uptake decreased by 1% (figure 5).
- Figure 5 presents the national uptake rates at 24 months for each vaccine from Q1-1999 to Q1-2017.

Community Healthcare Organisations (CHOs)

- The target uptake of 95% was reached for D₃, P₃, T₃, Hib₃ and Polio₃ in six CHOs, for HepB₃ in five, for PCV₃ in one, and in none for Hib_b, MenC₃, MenC_b, PCV_b and MMR₁ (table 3).

Local Health Office (LHO)

- Immunisation uptake rates in children 24 months of age in Q1-2017 are presented by LHO in Appendix 2.
- D₃, Hib_b, MenC₃, MenC_b, PCV₃, PCV_b and MMR₁ immunisation uptake rates are mapped by LHO in figures 6-12.
- The target uptake of 95% was reached in 20 LHOs for D₃, T₃, P₃, Hib₃ and Polio₃, 19 for HepB₃, 7 for PCV_b 6 for MMR₁, 5 for Hib_b, 4 for PCV₃, 2 for MenC_b and 1 for MenC₃.
- As mentioned above, national uptake rates for Hib_b, MenC₃, MenC_b, PCV₃ and PCV_b declined by 1%. In some LHOs in Q1-2017, compared to the previous quarter, there were declines of up to 3%, 6%, 6%, 7% and 9% for PCV_b, PCV₃, Hib_b, MenC_b, and MenC₃, respectively.

Table 3. Immunisation uptake (%) at 24 months in cohort born 01/01/2015–31/03/2015

Community Healthcare Organisation/LHO	No. in Cohort*	D ₃ /T ₃ / P ₃ / Polio ₃	Hib ₃	Hib _b	HepB ₃	MenC ₃	MenC _b	PCV ₃	PCV _b	MMR ₁
CHO1 (CN/MN, DL, SO/LM)	1264	97	96	94	96	86	92	88	94	94
CHO2 (G, MO, RN)	1398	97	97	94	97	93	na	97	na	94
CHO3 (CE, L, TN)	1375	94	94	91	94	86	91	91	94	93
CHO4 (NC, NSL, WC, KY)	2325	95	95	89	95	85	88	90	91	92
CHO5 (CW/KK, TS, WD, WX)	1655	95	95	89	94	85	89	92	93	93
CHO6 (DS, DSE, WW)	1227	93	93	87	93	83	86	89	92	91
CHO7 (DSC, DSW, DW, KE)	2493	95	95	91	95	87	90	91	93	93
CHO8 (LS/OY, LD/WH, LH, MH)	2215	96	96	92	96	87	89	91	94	94
CHO9 (DNW, DNC, DN)	2214	92	92	85	92	82	84	87	89	88
Ireland	16166	95	95	90	95	86	89	90	92	92

Please see Appendix 3 to translate LHO codes

na = not available

* As the denominator/number in cohort varied slightly according to vaccine D₃/T₃ cohorts are shown here

CHO3 Hib_b figures were extracted at a later date than the other vaccines in CHO3

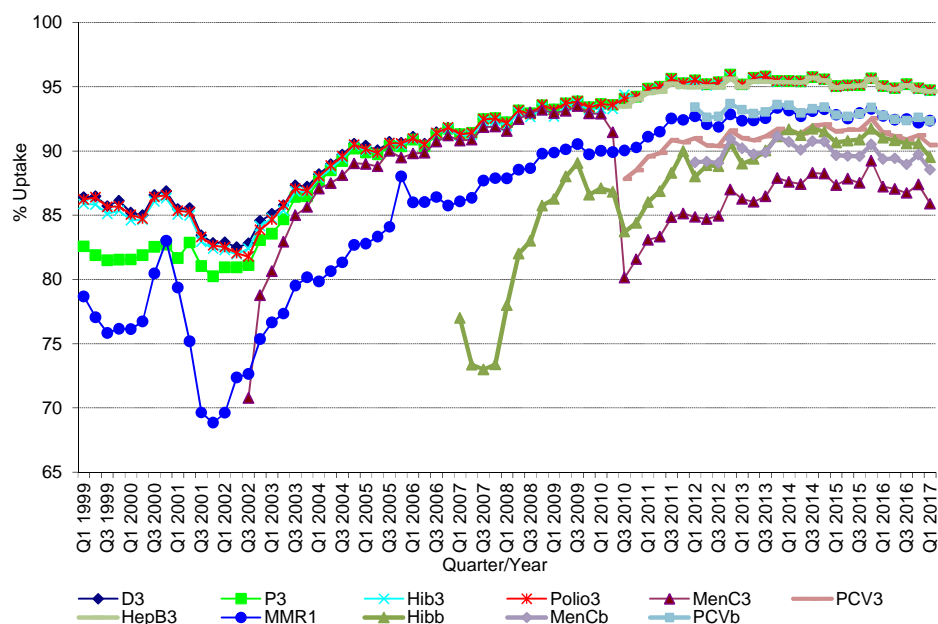


Figure 5. National quarterly immunisation uptake rates at 24 months

Notes: The Q4-2005 MMR₁ figure is based on data from seven of the eight HSE Areas. The Q1-2006 MMR₁ figure includes the HSE-Eastern Area figure that is an estimate only. The Q1-2007, Q3-2007, Q2-2008 and Q3-2008 Hib_b figures are based on data from seven of the eight HSE Areas. In Q1-2008 the HSE-SE changed their Hib_b data extraction method compared to previous quarters; in Q1-2008 the uptake of Hib_b in the HSE-SE was 83% compared to 53% in Q4-2007. The Q3-2008 MenC₃ figure is based on data from six of the eight HSE Areas. The Q1-2009 HSE-Eastern Area D₃, P₃, T₃, Polio₃ and MMR₁ uptake figures exclude those born on the 31/03/2007. The Q2-2009 HSE-Eastern Area Hib_b uptake figures exclude uptake figures from Dublin North. The Q4-2009 figures are based on data from seven of the eight HSE Areas. The Q4-2009 Hib_b figures also exclude uptake figures from Dublin North. The Q1-2010 figures are based on data from six of the eight HSE Areas. The Q1-2010 Hib_b figures also exclude uptake figures from Dublin North. The Q2-2010 and Q4-2010 figures are based on data from seven of the eight HSE Areas. MenC_b and PCV_b data are only available for 6 of the 8 HSE Areas from Q1 2012 to Q4 2014 and for 7 HSE Areas since Q1 2015

Conclusions

In Quarter 1-2016, national uptake rates at 24 months for D₃, T₃, P₃, Hib₃, Polio₃ and HepB₃ reached the target of 95%. Uptake of the remaining vaccines are lower; doses of these remaining vaccines are given at 12 and 13 months of age suggesting that parents are less likely to get the necessary vaccines for their children at this age. Uptake of Hib_b, MenC₃, MenC_b, PCV₃ and PCV_b decreased by one percent in Quarter 1-2016 compared to the previous quarter.

Acknowledgements

HPSC would like to thank all those involved in childhood immunisation including the General Practitioners, Practice Nurses, HSE Areas, Public Health Nurses, Immunisation Co-ordinators, Specialists in Public Health Medicine, Surveillance Scientists and Systems Analysts for their assistance.

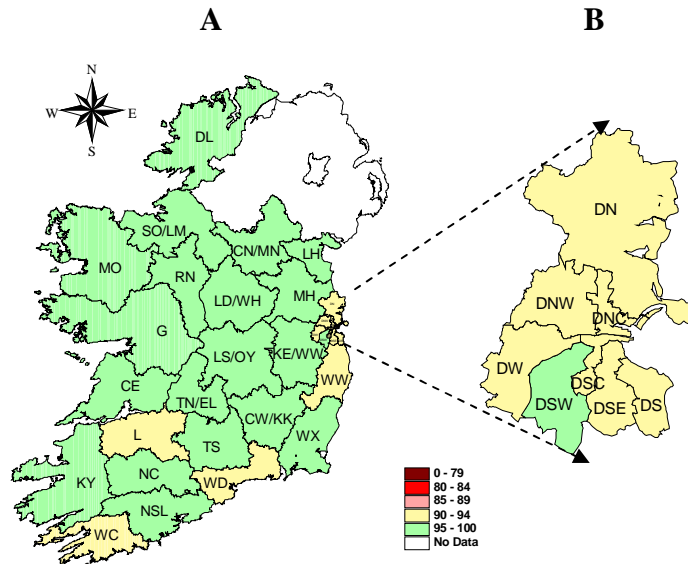


Figure 6. D₃ immunisation uptake rates (%) by LHO, in those 24 months of age in Quarter 1-2017, in (A) Ireland and (B) Dublin. Please see Appendix 3 to translate LHO codes.

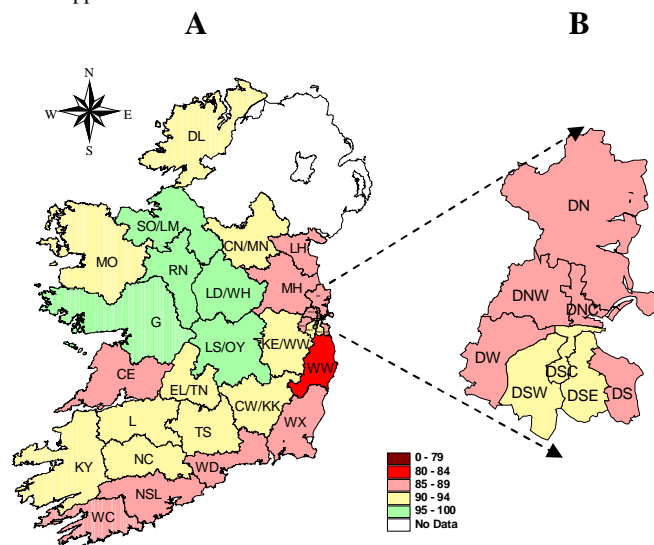


Figure 7. Hib₆ immunisation uptake rates (%) by LHO, in those 24 months of age in Quarter 1-2017, in (A) Ireland and (B) Dublin. Please see Appendix 3 to translate LHO codes.

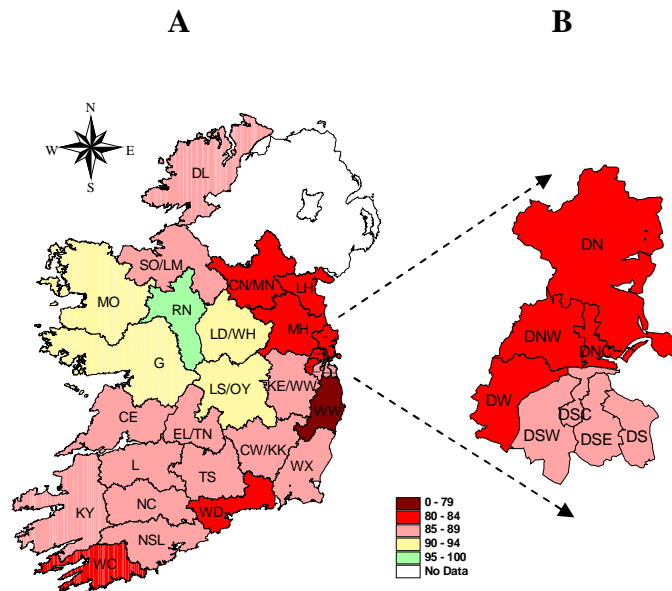


Figure 8. MenC₃ immunisation uptake rates (%) by LHO, in those 24 months of age in Quarter 1-2017, in (A) Ireland and (B) Dublin. Please see Appendix 3 to translate LHO codes.

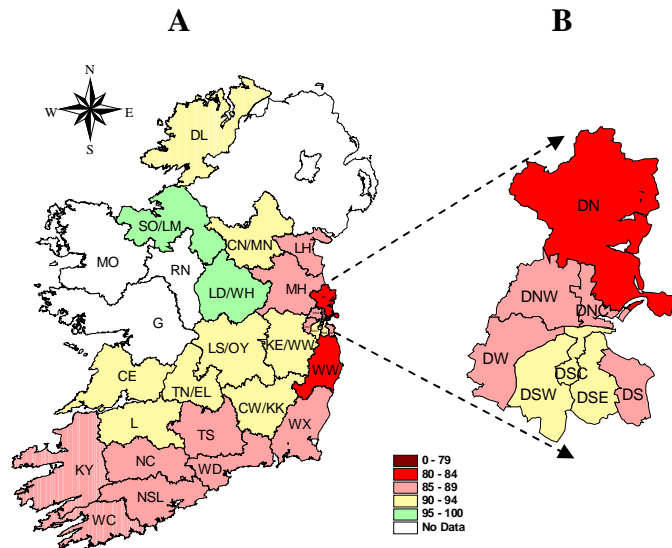


Figure 9. MenC_b immunisation uptake rates (%) by LHO, in those 24 months of age in Quarter 1-2017, in (A) Ireland and (B) Dublin. Please see Appendix 3 to translate LHO codes.

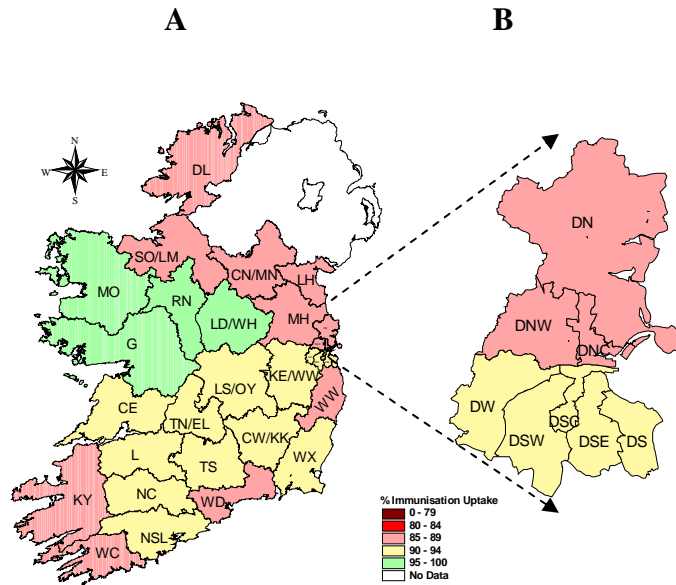


Figure 10. PCV₃ immunisation uptake rates (%) by LHO, in those 24 months of age in Quarter 1-2017, in (A) Ireland and (B) Dublin. Please see Appendix 3 to translate LHO codes.

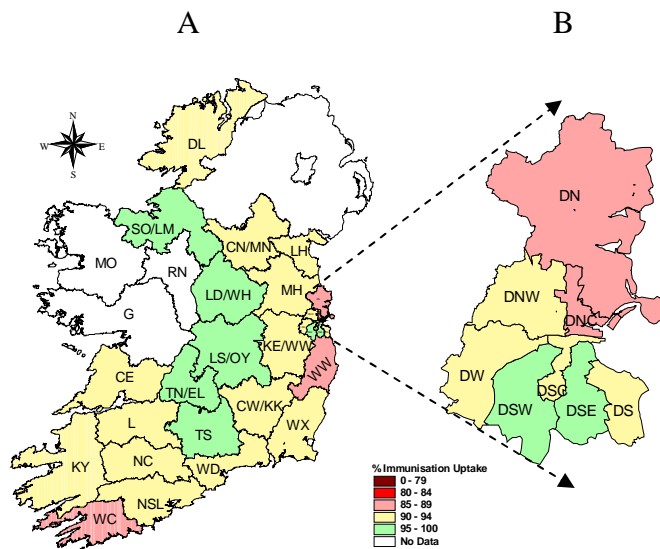


Figure 11. PCV₆ immunisation uptake rates (%) by LHO, in those 24 months of age in Quarter 1-2017, in (A) Ireland and (B) Dublin. Please see Appendix 3 to translate LHO codes.

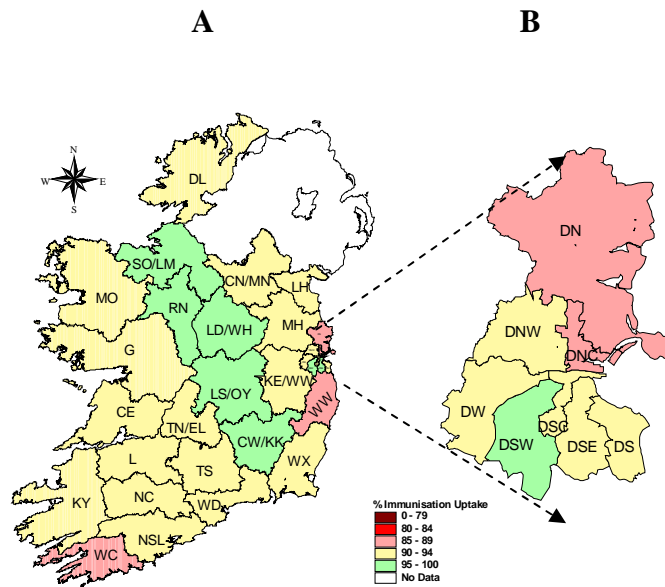


Figure 12. MMR₁ immunisation uptake rates (%) by LHO, in those 24 months of age in Quarter 1-2017, in (A) Ireland and (B) Dublin. Please see Appendix 3 to translate LHO codes.

Appendix 1

Immunisation uptake (%) at 12 months of age in cohort born 01/01/2016-31/03/2016												
Community Healthcare Organisation (CHO)	LHO/CHO	No. in cohort for BCG*	No. in cohort for D ₃ T ₃ #	Immunisation Uptake (%)								
				BCG*	D ₃ T ₃	P ₃	Hib ₃	Polio ₃	HepB ₃	MenC ₁	PCV ₂	
CHO1	Cavan/Monaghan	na	450	na	92	92	92	92	92	96	94	
	Donegal	501	501	0.0	92	92	92	92	92	91	95	
	Sligo/Leitrim	315	315	0.0	95	95	95	95	95	98	95	
	CHO1 Total*	816	1266	0.0	93	93	93	93	93	92	96	93
CHO2	Galway	865	865	0.0	94	94	94	94	94	94	97	
	Mayo	410	410	0.0	91	91	91	91	91	91	96	
	Roscommon	186	186	0.0	96	96	96	96	96	96	98	
	CHO2 Total	1461	1461	0.0	94	94	94	94	94	94	97	94
CHO3	Clare	390	390	0.0	92	92	92	92	92	92	94	
	Limerick	435	435	0.0	90	90	90	90	90	90	94	
	Tipperary NR/East Limerick	404	404	0.0	95	95	95	95	95	95	98	
	CHO3 Total	1229	1229	0.0	92	92	92	92	92	92	95	93
CHO4	North Cork	305	305	0.0	92	92	92	92	92	92	96	
	North South Lee	1283	1287	0.0	91	91	91	91	91	91	95	
	West Cork	175	175	0.0	80	80	80	80	80	80	90	
	Kerry	431	431	0.0	90	90	90	90	90	90	95	
	CHO4 Total	2194	2198	0.0	90	90	90	90	90	90	95	87
CHO5	Carlow/Kilkenny	396	396	0.0	89	89	89	89	89	89	95	
	South Tipperary	310	310	0.3	94	94	94	94	94	94	97	
	Waterford	411	411	0.0	92	92	92	92	92	92	96	
	Wexford	479	479	0.6	88	88	88	88	88	88	93	
	CHO5 Total	1596	1596	0.3	90	90	90	90	90	90	95	90
CHO6	Dublin South	382	382	0.0	92	92	92	92	92	92	95	
	Dublin South East	400	400	0.0	92	92	92	92	92	92	96	
	Wicklow	374	374	0.3	93	93	93	93	93	93	94	
	CHO6 Total	1156	1156	0.1	92	92	92	92	92	92	95	92
CHO7	Dublin South City	381	381	0.0	92	92	92	92	92	92	94	
	Dublin South West	561	561	0.0	89	89	89	89	89	89	95	
	Dublin West	590	590	0.0	91	91	91	91	91	91	94	
	Kildare/West Wicklow	895	895	0.0	92	92	92	92	92	92	95	
	CHO7 Total	2427	2427	0.0	91	91	91	91	91	91	95	91
CHO8	Laois/Offaly	519	519	0.0	96	96	96	96	96	96	96	
	Longford/Westmeath	468	468	0.0	96	96	96	96	96	96	96	
	Louth	na	451	na	92	92	92	92	92	92	95	
	Meath	na	750	na	92	92	92	92	92	92	96	
	CHO8 Total*	987	2188	0.0	94	94	94	94	94	94	96	94
CHO9	Dublin North West	820	820	0.0	88	88	88	88	88	88	92	
	Dublin North Central	467	467	0.0	87	87	87	87	87	87	90	
	Dublin North	929	929	0.0	90	90	90	90	90	90	95	
	CHO9 Total	2216	2216	0.0	89	89	89	89	89	89	93	88
Ireland *		14082	15737	0.0	91	91	91	91	91	91	95	91

na=not available

*BCG data were unavailable for Cavan/Monaghan, Louth and Meath

BCG vaccine stock in all areas expired at the end of April 2015. The HSE continues to experience ongoing delays with the supply of BCG vaccine. This continues to be a Europe wide issue. The number of cases of TB has been steadily falling in Ireland. The number of cases of TB for the years 2014 and 2015 was at the lowest level since records began. Most European countries do not give BCG vaccine to all babies. The National Immunisation Advisory Committee (NIAC), an independent expert group on immunisation and the Health Information and Quality Authority (HIQA) have both recommended that BCG vaccine does not now need to be given routinely to all babies in Ireland. Please see <http://www.hse.ie/eng/health/immunisation/pubinfo/babychildimm/vaccprevdisease/tb/> for further information.

#The denominator/number in cohort varied slightly according to vaccine. D₃T₃ cohort shown here.

Please note while North Lee and South Lee are two separate LHOs their combined immunisation uptake data are reported here.

CHO3 PCV2 data were extracted at a later date to the remaining vaccines in CHO3

Appendix 2

Immunisation uptake (%) at 24 months of age in cohort born 01/01/2015-31/03/2015													
Community Healthcare Organisation (CHO)	LHO/CHO	No. in cohort for D ₃ T ₃ *	Immunisation Uptake (%)										
			D ₃ T ₃	P ₃	Hib ₃	Hib _b	Polio ₃	HepB ₃	MenC ₃	MenC _b	PCV ₃	PCV _b	MMR ₁
CHO1	Cavan/Monaghan	411	96	96	96	92	96	96	84	91	87	92	92
	Donegal	512	96	96	96	93	96	94	86	91	89	93	93
	Sligo/Leitrim	341	98	98	97	97	98	98	87	96	89	96	97
	CHO1 Total	1264	97	97	96	94	97	96	86	92	88	94	94
CHO2	Galway	839	97	97	97	95	97	97	94	na	97	na	94
	Mayo	356	96	96	96	91	96	96	90	na	95	na	92
	Roscommon	203	97	97	97	95	97	97	95	na	96	na	96
	CHO2 Total	1398	97	97	97	94	97	97	93	na	97	na	94
CHO3	Clare	409	95	95	95	89	95	95	87	90	92	94	93
	Limerick	471	92	92	92	91	92	92	88	91	90	92	92
	Tipperary NR/East Limerick	495	95	95	95	91	95	95	85	91	90	95	93
	CHO3 Total	1375	94	94	94	91	94	94	86	91	91	94	93
CHO4	North Cork	361	96	96	95	91	96	96	87	89	91	93	94
	North South Lee	1335	95	95	95	89	95	95	85	88	90	92	92
	West Cork	189	92	92	92	87	92	92	80	86	87	87	88
	Kerry	440	95	95	95	90	95	95	86	89	89	92	92
	CHO4 Total	2325	95	95	95	89	95	95	85	88	90	91	92
CHO5	Carlow/Kilkenny	475	95	95	95	91	95	96	86	91	92	94	95
	South Tipperary	298	97	97	97	90	97	97	87	89	94	95	94
	Waterford	423	92	92	92	87	92	91	83	86	89	91	91
	Wexford	459	95	95	95	88	95	95	85	89	92	93	93
	CHO5 Total	1655	95	95	95	89	95	94	85	89	92	93	93
CHO6	Dublin South	428	94	94	94	89	94	94	86	89	90	92	91
	Dublin South East	379	93	93	93	90	93	93	88	90	94	95	94
	Wicklow	420	90	90	90	81	90	90	76	80	85	88	88
	CHO6 Total	1227	93	93	93	87	93	93	83	86	89	92	91
CHO7	Dublin South City	380	94	94	94	90	94	94	87	90	90	92	92
	Dublin South West	576	97	97	97	93	97	97	88	92	93	95	95
	Dublin West	611	94	94	94	87	94	93	83	86	90	92	91
	Kildare/West Wicklow	926	95	95	95	92	95	95	89	91	91	94	93
	CHO7 Total	2493	95	95	95	91	95	95	87	90	91	93	93
CHO8	Laos/Offaly	584	97	97	97	97	97	97	90	92	94	96	97
	Longford/Westmeath	438	98	98	98	98	98	98	92	96	95	97	98
	Louth	460	95	95	95	86	95	95	81	85	89	92	92
	Meath	733	96	96	96	89	96	96	83	86	89	91	92
	CHO8 Total	2215	96	96	96	92	96	96	87	89	91	94	94
CHO9	Dublin North West	802	94	94	94	85	94	94	82	85	88	91	90
	Dublin North Central	447	91	91	91	85	91	91	83	85	86	87	87
	Dublin North	965	90	90	90	85	90	90	81	84	85	88	86
	CHO9 Total	2214	92	92	92	85	92	92	82	84	87	89	88
Ireland	16166	95	95	95	90	95	95	86	89	90	92	92	

na=not available

*The denominator/number in cohort varied slightly according to vaccine. D₃T₃ cohorts show n here.

Please note while North Lee and South Lee are two separate LHOs their combined immunisation uptake data are reported here.

CHO3 Hib_b figures were extracted at a later date than the other vaccines in CHO3

Appendix 3

Local Health Office (LHO) Abbreviations (used in maps in this report)	Local Health Office (LHO)
CE	Clare
CN/MN	Cavan/Monaghan
CW/KK	Carlow/Kilkenny
DL	Donegal
DN	Dublin North
DNC	Dublin North Central
DNW	Dublin North West
DS	Dublin South
DSC	Dublin South City
DSE	Dublin South East
DSW	Dublin South West
DW	Dublin West
G	Galway
KE/WW	Kildare/West Wicklow
KY	Kerry
L	Limerick
LD/WD	Longford/Westmeath
LH	Louth
LS/OY	Laois/Offaly
MH	Meath
MO	Mayo
NC	North Cork
NSL*	North South Lee*
RN	Roscommon
SO/LM	Sligo/Leitrim
TN/EL	Tipperary North /East Limerick
TS	South Tipperary
WC	West Cork
WD	Waterford
WX	Wexford
WW	Wicklow

*Please note while North Lee and South Lee are two separate LHOs their combined immunisation uptake data are reported here